

CERTIFICATE OF LOCATION OF GOVERNMENT CORNER

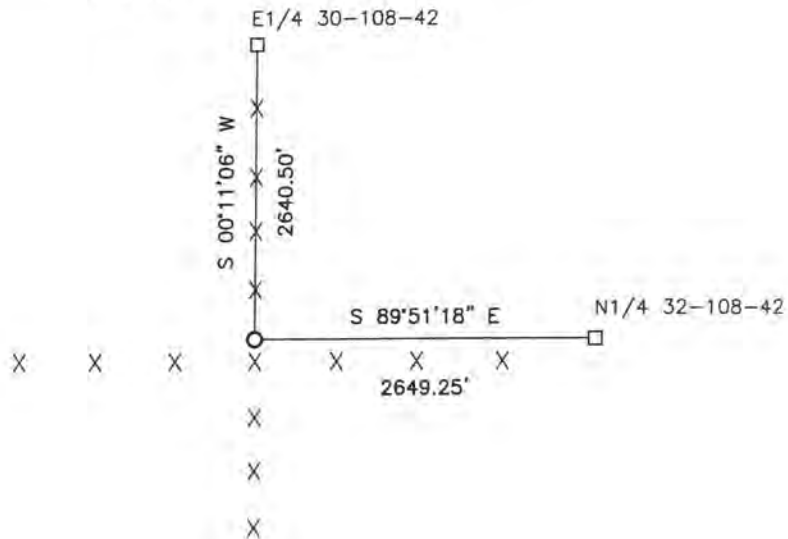
NORTHEAST Corner of Section 31, Township 108, Range 42, 5TH P.M.

STATE OF MINNESOTA, County of MURRAY

At the corner location shown on the sketch:

- On _____ found a _____
- DATE
- left monument as found, lowered monument, removed monument (explain)
- On 6/20/14 placed a 5/8" iron w/seal #43844
- DATE

SKETCH OF REFERENCE TIES



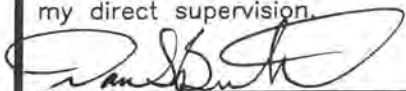
Minnesota State Plane Coordinate
System Murray County Datum
NAD83 (1996)

NO TIES

N: 200636.310
E: 458738.540

Statement of evidence relative to this corner location is on back of page.

I hereby certify that this document and the data contained herein was prepared by me or under my direct supervision.


SIGNATURE

1/14/15
DATE

Registration No. 43844

- Land Surveyor, Professional Engineer
 County Surveyor, County Engineer

OFFICE OF THE COUNTY RECORDER
County of _____

I hereby certify that this document was filed in the Co. Recorders office at _____ .M on the _____ day of FEB 20 2015 A.D. 20 _____

County Recorder Eruehyn C. Larson

By _____, Deputy

DOCUMENT NO. _____

Statement of Evidence

In 1861, L.G.W. Fletcher did original subdivision of the township.

In 1927, Peter Mattson set a old fence corner in mound at the corner.

On June 20, 2014, Bueltel-Moseng Land Surveying set a $\frac{5}{8}$ " iron with seal #43844 at the corner. Its is 0.2 feet north of corner fence post.